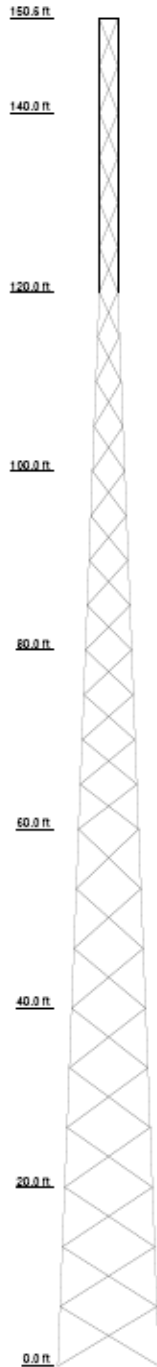




150 Foot Self Supported Tower

Section	11	10	9	8	7	6	5	4	3	2	1
Legs											
Leg Grade											
Diagonals											
Diagonal Grade											
Top Grid											
Face Width (ft)											
# Panels @ (ft)											
Weight (lb)											



DESIGNED APPURTENANCE LOADING

TYPE	ELEVATION	TYPE	ELEVATION
4' Lighting Rod	150	4' Grid Dish	150
4' Grid Dish	150	4' Grid Dish	150

MATERIAL STRENGTH

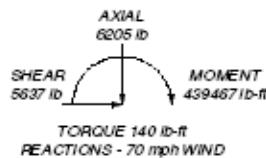
GRADE	Fy	Fu	GRADE	Fy	Fu
A500-50	50 ksi	62 ksi	A529-50	50 ksi	65 ksi

TOWER DESIGN NOTES

1. Tower designed for a 70 mph basic wind in accordance with the TIA/EIA-222-F Standard.
2. Deflections are based upon a 50 mph wind.
3. TOWER RATING: 89.9%

MAX. CORNER REACTIONS AT BASE:

DOWN: 45164 lb
 UPLIFT: -36901 lb
 SHEAR: 3607 lb



Erickson Broadcast Sales Corporation
 PO Box 2575 – Albany, OR 97321
 541-460-0249 www.ebsradio.com

NOW ONLY \$18,990.00

FOB Factory